



WILDLIFE & CULTURE KENYA SAFARIS

Itinerary Summary

- Entebbe
- Bwindi Impenetrable National Park
- Mwanza
- Serengeti National Park
- Musoma
- Kisumu
- Maasai Mara National Reserve
- Nairobi

SPEAK TO AN EXPERT



Need more information:

+1-785-491-9094

threesixtyexplorer.com

Your Departure Consultant :

Enoch Akowuah

PROMO

**WIN A
SOUVENIR**



2026 KENYA SAFARI

Adventure tours for every traveler

WHY CHOOSE THREESIXTY EXPLORER?

Our mission is to deliver safe, reliable, affordable, and unforgettable travel experiences for individuals and groups across the Africa and around the globe. We connect tourists to memorable adventures and exciting business opportunities, ensuring every journey is safe, enriching, and hassle-free.

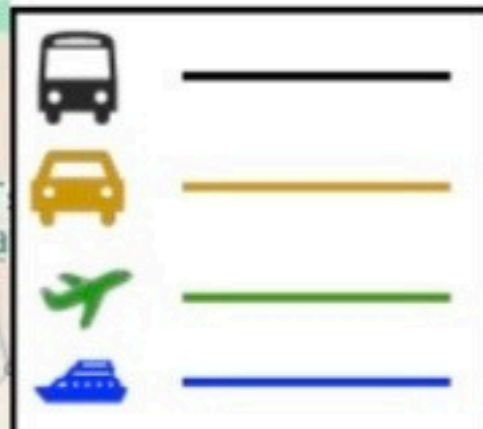
COMMITMENT TO SAFETY

Your safety is our top priority, so we go the extra mile to ensure that every trip is not only enjoyable but also secure. As part of this commitment, we include air ambulance service including other medical service that will be readily available in the event of emergencies. This ensures that travelers receive prompt and professional care whenever needed, providing you with peace of mind throughout your journey.

DISCOVER THE HIGHLIGHTS OF KENYA



Itinerary Map



Itinerary at a glance

Itinerary	Accommodations	Destinations
Nairobi	Fairview Hotel	Nairobi
Nairobi	Fairview Hotel	Nairobi
Nairobi - Aberdares	The Ark	Aberdares
Aberdares - Ol Pejeta	Sweetwaters Tented Camp	Ol Pejeta
Ol Pejeta - Samburu	Ashnil Samburu Camp	Samburu
Samburu	Ashnil Samburu Camp	Samburu
Samburu - Lake Naivasha	Naivasha Sopa Lodge	Lake Naivasha
Lake Naivasha	Naivasha Sopa Lodge	Lake Naivasha
Lake Naivasha - Masai Mara	Ashnil Mara Camp	Masai Mara
Masai Mara	Ashnil Mara Camp	Masai Mara
Masai Mara	Ashnil Mara Camp	Masai Mara
Masai Mara - Nairobi		Nairobi

DAY 1 | NAIROBI

Nairobi

Met by CASCADES AFRICA SAFARIS our partner on arrival at the Jomo Kenyatta International Airport and transferred to your hotel.

Check in (earliest 1100hours unless prior arrangement is made). Lunch will be included if your arrival in Nairobi is in the morning.

Rest of the day (for morning arrival) is spent at leisure. The hotel has a garden so guests can walk outdoors. Also the hotel location is a very safe neighborhood just next to the Israeli embassy so it is safe for guests to walk within the neighborhood all the way approximately a kilometer to the city observation point where you see a good view of the whole city of Nairobi. Our guide will be at your disposal to take you on this walk



Nairobi

Kenya's colorful capital offers a wide range of tourist attraction sites which can be arranged depending on your time, interests and of course budget. It is the only city in the world set with a national park in the backdrop.

The Nairobi National Park offers a variety of wildlife including large herds of zebra, wildebeest, buffalo and giraffe roam the plains and black rhino, ostrich, baboons, cheetah and lions are some of the other photogenic inhabitants.

There is also the Nairobi National Museum, The Giraffe Center and also the Sheldrick Elephant Orphanage and lots of other attractions within and surrounding the city.

DAY 2 | NAIROBI

Breakfast at your hotel main restaurant.

After breakfast, proceed on a day excursion in the Karen neighborhood of Nairobi.



GIRAFFE CENTER

You will visit to the Giraffe Center and thereafter a tour of the Karen Blixen Museum

The Africa Fund for Endangered Wildlife (A.F.E.W.) Kenya was founded in 1979 by the late Jock Leslie-Melville, a Kenyan citizen of British descent, and his American-born wife, Betty Leslie-Melville. They began the Giraffe Centre after discovering the sad plight of the Rothschild Giraffe. A subspecies of the giraffe found only in the grasslands of East Africa.

Karen Blixen Museum

Karen Blixen Museum was once the centre piece of a farm at the foot of the Ngong Hills owned by Danish Author Karen and her Swedish Husband, Baron Bror von Blixen Fincke. Located 10km from the city centre, the Museum belongs to a different time period in the history of Kenya. The farm house gained international fame with the release of the movie 'Out of Africa' an Oscar winning film based on Karen's autobiography by the same title.

After the tours, proceed to enjoy hot lunch at the nearby Tamambo Karen Blixen Restaurant.

After the lunch, proceed to the nearby Kazuri Beads, a curio shop where you can explore and perhaps bargain a price for a nice African art to take back home. Later proceed back to your hotel.

DAY 3 | NAIROBI - ABERDARES

After breakfast depart and drive from Nairobi through the central highlands of Kenya, to the Aberdares National Park.



EN ROUTE NAIROBI- ABERDARES

En route Nairobi–Aberdares we will have a brief stop in a town called Karatina to see a typical Kenyan open market place. It is just on the way and we do a little stretching then back in our cars and proceed.

Aberdares

A beautiful mountain range in the central highlands of Kenya. Drive north passing near Thika which boasts the world's third largest pineapple plantation and is home to Del Monte.

ABERDARES

Aberdares has high mountains, dense rain forest, and thickets of bamboo, rushing rivers, cascading waterfalls, abundant birdlife, rare monkeys, and the opportunity to spot elephants, leopards, and lions sipping water from a forest waterhole from a vantage-point high in the forest. The park is famous for being the best place in Africa to get close to free-ranging elephants.

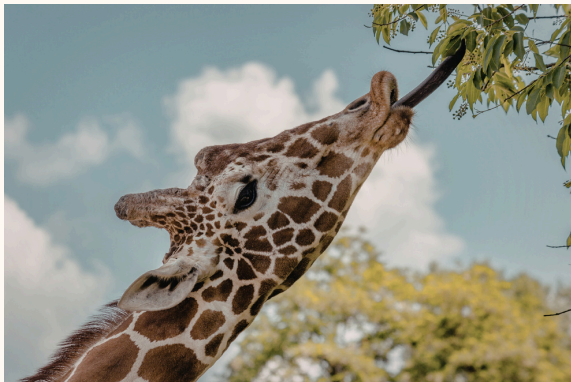
Other attractions of the park include opportunities to meet Maasai and spectacular views of Mount Kilimanjaro, the highest free-standing mountain in the world

Arrive at the Aberdares Country Club, the base hotel for The Ark "tree hotel". Have lunch at the base hotel followed by afternoon transfer to The Ark.

You store your luggage at the base hotel and take only an overnight bag to The Ark famous for the viewing decks where you are woken up whenever animals come to the pool to view them from the comfort of your rooms.

DAY 4 | ABERDARES - OL PEJETA

After breakfast transfer from the Ark back to the Aberdare Country Club. Rejoin your Safari guide who will drive you to the nearby Ol Pejeta Conservancy just near the equator line.



THE EQUATOR CROSSING

We have a stop at the Equator crossing where we do an experiment and get a certificate to show that you crossed the equator. A good opportunity for group to get out of the vehicles, stretch out and take photos of the equator and Mount Kenya in the background

OL PEJETA CONSERVANCY

Home to "The Big Five" (lion, leopard, elephant, rhino and buffalo) plus an exciting catalogue of; giraffe, zebra, eland, Oryx, waterbuck, Grant's gazelle, Thompson's gazelle, cheetah, silver-backed jackal, hartebeest and baboon. The reserve also boasts several hundred bird species. The reserve has the highest ratio of game to area of any park or reserve in Kenya.

OL PEJETA CONSERVANCY (CONTINUE.....)

Sweetwater's Chimpanzee Sanctuary was established in cooperation with the Kenya Wildlife Service and the Jane Goodall Institute for Conservation Projects for Chimpanzees throughout the World, the 1 km sq. sanctuary is a non-profit-making venture and the only sanctuary of its kind in Kenya. A gentle and charming diversion for children and adults alike, it offers visitors the unique opportunity of taking a boat ride on the Ewaso Nyiro River, which flows through the centre of the sanctuary where 26 orphaned chimps enjoy the peace and harmony of their natural environment.

Arrive with en route game drive to check in and have lunch followed by a short siesta.

Later embark on an afternoon game drive including visit to the Rhino and Chimpanzee sanctuaries.

Return with sunset for dinner and overnight at:

Sweetwaters Tented Camp-Standard Room

DAY 5 L PEJETA - SAMBURU

After breakfast depart and drive further north via Nanyuki and Mt Kenya to reach Samburu Game Reserve. Rugged and remote this wildlife reserve is home to rarely found species such as the Beisa Oryx, Grevy's zebra, blue-necked Somali ostrich and reticulated giraffe. The park is also renowned for its big cats as the nearby Ewaso Nyiro River attracts many leopards.

We can stop by either a wheat farm or a local small scale farmers farm to interact with the locals and see the normal way of life.

Samburu

Samburu Game Reserve is situated in the hot and arid fringes of Kenya's vast Northern Frontier District. The area is home to the Samburu tribe, pastoral relatives of the Masai. The landscape is rugged and dramatic - against a backdrop of volcanic mountains, gaunt hills and withered scrub tree punctuate the sparse and dry terrain with clusters of the incredibly hardy desert rose providing the occasional flash of vivid colour. The Ewaso Nyiro river, lifeline of the area, runs along the southern boundary dividing Samburu from Buffalo Springs Reserve. Crocodile and hippo share the river with the many small herds of elephant which bathe and frolic in the muddy brown waters during the heat of the day before returning later to browse on the lush vegetation of the riverine forest. Buffalo, lion, leopard, cheetah and plains game may also be seen but a special feature of this Reserve are the various species of game unique to these northern parks - Beisa oryx, the long necked gerenuk, Grevy's zebra, reticulated giraffe and the blue shanked Somali ostrich. Samburu Reserve covers an area of 104 km² on the northern bank of Uaso Nyiro River.

Arrive with en route game drive to check in and have lunch followed by a short siesta. Later embark on an afternoon game drive. Return with sunset for dinner and overnight at:

Ashnil Samburu Camp-Luxury Tent

DAY 6 | SAMBURU

Day spent with game drives in the reserve which provides some of the best and most colorful game viewing in the country. Samburu is inhabited by a wide variety of animals, more so the rare species such as the long-necked gerenuk, gray's zebra, reticulated giraffe and Beisa Oryx. Other animals include the leopard, the mighty lion, elephants; crocodiles can be seen swimming in the Ewaso Nyiro River along with the hippo.

Today we also have an opportunity to visit a Samburu Village (these are sister tribe to the world known Masai tribe)

Meals and overnight at:
Ashnil Samburu Camp-Luxury Tent



DAY 7 ISAMBURU - LAKE NAIVASHA

After breakfast and check out, our expert guide will drive you via Nyahururu through a beautiful countryside and onwards to Lake Naivasha with its commanding setting at the foot of the Rift Valley Escarpment.

En route today we have a stop for hot lunch at the Panari Nyahururu Hotel near the Thompson Falls. We also take a small walk near the fall.

Arrive in Naivasha later in the afternoon.

Lake Naivasha

Lake Naivasha is a freshwater lake in the Kenya section of Africa's Great Rift Valley, and is located north west of Nairobi with the town of Naivasha on its north eastern shore. At 1,890 meters (6,200 ft) above sea level, the lake is at the highest point in the Kenyan rift, and is set in a complex geological combination of volcanic rocks and sedimentary deposits from a much larger Pleistocene era lake. Because the outlet for this ancient lake, now called Njorwa Gorge, is today much higher than the lake, the original Lake Naivasha must have indeed been a truly vast expanse of water. The gorge now forms the entrance to the Hell's Gate National Park which, for obvious reasons, today contains some spectacular examples of water and weather-worn rock formations as well as an abundance of flora and fauna to include some extremely rare, resident breeding pairs of Lammergeyers, otherwise known as Bearded vultures.

Other attractions nearby include the Hell's Gate National Park and the Crescent Island. Visits can be arranged to these areas especially if you have a full free day.

Check in and rest of the afternoon is spent relaxing at your lodge with great views and you often see giraffes and zebras come to graze near the lodge.

Dinner and overnight at:

Naivasha Sopa Lodge-Standard Room

DAY 8 | LAKE NAIVASHA

Day spent having a view of birds and wild life. Lake Naivasha is a diverse bird and animal habitat, Colobus monkeys are often seen in the canopy of the Acacia forests around the lake, and on the north shore of the lake Buffalo, Waterbuck and Eland are often seen grazing.

Today you also enjoy return boat transfers to the nearby Crescent Island where you will have an exciting walk experience to see all the grazing animals and hundreds of birdlife the Island and the lake have to offer.

Crescent Island

There is just one Crescent Island Game Sanctuary. Located on Lake Naivasha, in the Great Rift Valley, Kenya. It is one of the most beautiful parks in Kenya and is often called Naivasha's best-kept secret. Surrounded by water, it is actually a peninsula and is currently only accessible by boat from the East or West side.

So come and spend the morning, afternoon or bring a picnic and spend the whole day with the beautiful birds and graceful animals.

The shores host abundant birdlife including pelicans, cormorants, and fish-eagles with their haunting cry. There are more animals per acre than any other Kenyan Park, hence many film companies have been to the Island to film the herds of Wildebeest, Waterbuck, Zebra, and Gazelle.

Meals and overnight at:

Naivasha Sopa Lodge-Standard Room



DAY 9 SUNDAY 25 OCTOBER 26 LAKE NAIVASHA - MASAI MARA

After breakfast depart via Narok to the Masai Mara National Reserve offering wonderful scenery and plenty of game. It is perhaps the only region left in Kenya where the visitor may see animals in the same super-abundance as existed a century ago.

Masai Mara

Justifiably one of the most famous reserves in Africa, its' dominant feature are the great rolling plains of savannah grasslands, which sustain the greatest variety of wildlife in Africa and indeed in the world. The concentration of game is at its highest from July through October when the Mara is host to the annual migration of more than a million wildebeest. However, game viewing is excellent year round with giraffe, buffalo, zebra, eland, hartebeest and Thompson's gazelle offering a rich choice for the predator's lion, leopard and cheetah. It should be noted, however, that during the rainy season, the grass is fairly tall in some areas, which may affect visibility and restrict game drives slightly.

The Maasai people, after whom the park is named, are nomadic. While on game drives, you will often notice young tribesmen herding their cattle amongst the plains game. They are colorfully attired, usually wrapped in bright red cloths, and armed with spears.

Arrive in the Mara region with en route game drives

Check in at sunset for dinner and overnight at:
Ashnil Mara Camp -Luxury Tent



Today we visit a Masai Village en route and continue with game drives on our way to our overnight stop. We enjoy our packed lunch boxes at a picnic site inside the game reserve.

Day 10 | Masai Mara

Day spent game-viewing in the reserve. With over 450 species of birds and animal species, Explore the plains and rolling hills for a chance to spot the elephant, black-manned lion, leopard, buffalo, cheetah, and with diverse species of hoofed animals.

Today we have yet another exciting activity. We take you to the part of the game reserve that borders Kenya and Tanzania where we can enjoy our picnic lunch and even take a nice walk along the border with rangers escorting us you might even be able to cross over to the other side (subject to permission by authorities)

Meals and overnight at:

Ashnil Mara Camp -Luxury Tent



Day 11| Masai Mara

Yet another full day exploring the expansive Masai Mara. Today you can also consider taking an early morning hot air balloon safari which can be booked while in Kenya.

Meals and overnight at:
Ashnil Mara Camp -Luxury Tent



DAY 12 WEDNESDAY 28 OCTOBER 26 MASAI MARA - NAIROBI

After breakfast check out and drive with your safari guides, now already friends, depart from Masai Mara and drive back to Nairobi, Kenya's colourful capital city.

Arrive in time for a farewell meal at The Carnivore Restaurant or alternative (for our vegetarian guests). More optional extra activities including more last minute shopping can be arranged in Nairobi time permitting.

After lunch transfer to Jomo Kenyatta Airport for your onward international flight



Your Trip Cost

Nett Prices in US Dollar (USD) **Per person sharing double/twin room**

Notes:

**Prices only apply if a safari takes place and is completed within the specified price periods.
Specific prices will be provided for any safaris or services that extend into next price period.**

Quotation includes:

- 2 Nights Fairview Hotel - Standard Rooms on Bed & Breakfast basis • Alternative Hotels in Nairobi at applicable supplements/reductions -
 - check out hotels <https://cas.ke/acc-list/nairobi>
 -
- 1night The Ark - Standard Tents on Full Board basis
- Alternative Hotels in Aberdares National Park at applicable supplements/reductions -
 - check out hotels <https://cas.ke/acc-list/aberdare-national-park>
 - 1night Sweetwaters Tented Camp - Standard Tents on Full Board basis
- Alternative Hotels in Ol Pejeta Conservancy at applicable supplements/reductions -
 - check out hotels <https://cas.ke/acc-list/ol-pejeta-laikipia-conservancies>
 - 2nights Ashnil Samburu Camp - Standard Tents on Full Board Basis
- Alternative Hotels in Samburu Game Reserve at applicable supplements/reductions -

- check out hotels <https://cas.ke/acc-list/samburu-game-reserve>
 - 2nights Naivasha Sopa Lodge - Standard Rooms on Full Board Basis
 - Alternative Hotels in Naivasha at applicable supplements/reductions -
 - check out hotels <https://cas.ke/acc-list/rift-valley-lakes>
 - 3nights Ashnil Mara Camp - Standard Tents on Full Board Basis
 - Alternative Hotels in Masai Mara at applicable supplements/reductions - · check out hotels <https://cas.ke/acc-list/masai-mara-game-reserve>
 -
 - Meals where mentioned in the itinerary (BB-included Bed & Breakfast, L-included lunch, D-included dinner)
 - All national park entrance fees (valid 24hours single entry as per itinerary with 12 hours of game drive time validity)
 - Airport transfers
 - Overland safari transportation in a 6-Seater Safari 4x4 Land Cruiser (vehicle specially built with a pop-up roof for easy sightseeing and photography)
 - Services of a professional experienced English speaking Driver/Guide.
 - All activities mentioned in the itinerary
 - Flying Doctors emergency evacuation cover during the time on Safari (please note terms and conditions apply for an evacuation to be justified)
- Complementary courtesy of Cascades Africa Safaris:
- A Safari hat
 - Welcome package (a Safari pouch for your Safari documentation - flight tickets, service vouchers, safe reference to our dedicated 24hours emergency contacts)
 - Complementary 1litre mineral water per person per day in Cascades Africa Safari Vehicles

Quotation Excludes:

Lunch and dinner except where included above
International air transportation
Domestic flights unless specifically mentioned under inclusions (please note where domestic flights are included light aircrafts are used and therefore luggage limit per person is usually 15kgs including hand luggage and soft bags are recommended as opposed to hard suitcases)

Visa fees

International departure tax unless included in international air ticket

Incidental tips to hotel/lodge staff and porters (budget approximately US\$ 2 - US\$ 4 per person per day), gratuity to tour driver/guide (budget approximately US\$ 8-10 per person per day)

All items of a personal nature such as laundry and drinks and all other services not mentioned under inclusions above.

ACCOMMODATION INFORMATION



The Fairview Hotel was established in Nairobi in 1946 and has been run by the same family ever since, maintaining to this day a welcoming, friendly and efficient service, but with up-to-date business and conference facilities. The Fairview Hotel & Apartments are a charming and successful blend of the past and the present. Situated 1 km from the city and 19 km from the Jomo Kenyatta International

Airport, the hotel nestles along Bishop Rd on Nairobi Hill; on five acres of beautiful landscaped gardens unmatched by the other city hotels. Quoting Elle Magazine, "The Fairview is that rare bird in Africa - a comfortable hotel that hasn't decked itself out in feathers of up-market gloss and tasteless luxury. . . a world away from the overheated bustle . . ."

[MORE INFO & IMAGES](#)

<https://cas.ke/accomodation/fairview-hotel-nairobi>

The Ark

This tree lodge is shaped like the Ark with 60 cabin-styled rooms. The Aberdare National Park was created in 1950 to protect the forested slopes and moors of the Aberdare Mountains. While the park has elephant, lion, rhino, black leopard and the beautiful but elusive bongo antelope, it is rarely visited.

Set in the heart of the Aberdare National Park, this unique game lodge overlooks a floodlit waterhole and salt lick which attracts a host of wildlife - elephant, rhino, leopard, bushbuck and occasionally an elusive bongo or giant forest hog.

Resembling and named after Noah's Ark, The Ark comprises three decks from which numerous balconies and lounges provide superb vantage points for game viewing. A ground level bunker provides excellent photographic opportunities and takes you closer than you would believe possible to the animals.

Comfortable en-suite cabins are fitted with buzzers to announce the arrival of one of the "Big Five" at the waterhole. The Ark has 60 'cabin-styled' rooms, comprising 6 single, 37 twin, 10 double and 7 triple-bedded cabins. All rooms have private bathrooms with shower; all are comfortably furnished and enjoy a view of the forest waterhole.

Dinner and breakfast are served "On Board" in the main dining room. Located on one of the viewing decks is a lounge and a bar.

The Ark has four game viewing areas from which to observe the ever present wildlife. There is a ground level hide where you'll literally come face to face with animals.

MORE INFO & IMAGES

<https://cas.ke/accomodation/the-ark>



SWEETWATERS TENTED CAMP



Sweetwaters Tented Camp lies in sheltered oasis set in the pristine calm of its own private reserve. One of only four private game reserves in Kenya, Sweetwaters offers exceptional game viewing and private seclusion. Sweetwaters Tented Camp lies in the heart of privately owned 24,000 acres of Sweetwaters Game Reserve, enjoying magnificent views across the game - studded plains to the snowcapped peaks of Mount Kenya. Sweetwaters Tented Camp is a two and a half hour drive from Nairobi. A sheltered oasis, clustered around a waterhole and set in the pristine calm of its own private reserve, Sweetwaters Tented Camp is in a class of its own. Located in typical savannah grasslands with Whistling Thorn' and other acacia trees, overlooking a floodlit waterhole and salt-lick, Sweetwaters is truly an oasis. It offers guests some of the finest tented accommodation in Kenya, personalised service and attention, and abundant game viewing opportunities.

MORE INFO & IMAGES

<https://cas.ke/accomodation/sweetwaters-serena-camp>

Ashnil Samburu Camp

Comfortable deluxe tents spread out along the shady banks of the Ewaso Nyiro River under a thick stand of Doum Palms and acacia trees that are a feature of the area.

The main guest area, shaded by a canopy of acacia trees consists of the reception, lounge area, dining area, bar, and veranda deck with a view of the river. Guest rooms are spread out in 12 tents either side of the Main building. Each of the 24 exclusive comfortable deluxe tents give perfect views of the Ewaso Nyiro River, surrounding beautiful landscapes and all life this brown river supports. For the disabled, accommodation in tents is available. Every spacious tent consists of a king size bed, dressing area, sitting area, luggage rack, in door shower and toilet facilities among other facilities to provide a memorable stay close to nature.

Unwind by the magnificent Ewaso Nyiro River enjoying a sundowner. Evening entertainment of Samburu cultural talks and dancers gives you a special opportunity to gain in-sight in to the traditional lifestyle of the Samburu people. Also visit the neighboring Samburu village and buy their unique handicrafts.



MORE INFO & IMAGES

<https://cas.ke/accomodation/ashnil-samburu-camp>

The Lake Naivasha Sopa Lodge

The Lake Naivasha Sopa Lodge is located on the southern shores of Lake Naivasha, the only freshwater lake within Africa's Great Rift Valley. Amidst bathing hippo, the lake teems with freshwater fish both for fishing and sport. This is the safari traveler's place of relaxation and rejuvenation; a perfect blend of luxury and safari spirit. Here the avid birdwatcher sees paradise in a vast array of exotic birdlife. The lake region is host to distinctive herds of plains animals and the elusive, black-faced colobus monkey. Lake Naivasha Sopa Lodge has a total of 21 cottages, each consisting of 4 rooms, for a total of 84 rooms - all with panoramic views of the environs and the lake. Luxuriously appointed rooms feature spacious sunken lounges, while upper floor rooms have their own private balcony on which to relax, sunbathe or view the wildlife that wanders around the beautiful grounds.

[MORE INFO & IMAGES](#)

<https://cas.ke/accomodation/lake-naivasha-sopa-lodge>



Ashnil Mara Camp

Ashnil Mara Camp, with 40 luxury tents, is located in the Maasai Mara National Reserve and close to the Mara River famous for the wildebeest migration.

The much anticipated property comprises 40 luxury tents overlooking the plains of the Maasai Mara and includes luxury ensuite bathrooms, walk-in closets and a sun deck for relaxation while watching game. Its opening does not only add another dimension to the Mara, already a famous national reserve in the world, but it also becomes another important landmark in the travel destination.

[MORE INFO & IMAGES](#)



<https://cas.ke/accomodation/ashnil-mara-camp>

Crescent Island Walk

Submerged rim of an immersed volcanic crater forming a bay which is the deepest point of the lake, the Crescent Island is a preserved sanctuary of wildlife where you will wander among tiny herds of mammals. A peaceful experience □ Giraffe, antelope, gazelle, eland, zebra and lot of birds. Buffaloes are rare. The usual way to access the small island is by boat and local people would be happy to serve you. There is also possibility to access it by road passing through the "Horse Riding Complex" then keep right. Fee is asked to access the island.



Destination Information



Location:

Kenya lies astride the equator on the eastern coast of Africa. It is a medium-sized country by continental standards; covering an area of about 586,600km sq. Inland water bodies cover some 10,700km sq, the bulk of this in Lakes Victoria and Turkana.

EXPLORE KENYA DESTINATIONS

<https://cas.ke/country/kenya>



Climate:

By and large, Kenya's climate is warm all year round, with plenty of sunshine and cool nights and mornings. However, if you are traveling across Kenya, expect to experience different weather patterns due to Kenya's differing topographical dimensions. Generally, the hottest season falls between February and March with temperatures as high as 93°F, while the coolest season falls between July and August with temperatures dropping to the low 50's(°F). In Mombasa, Malindi and around the coastal regions, it is humid and hot.

The city of Malindi, for instance, receives an average rainfall of 1,050 mm (41 in) per year, with average temperatures and weather forecasts ranging from 70 to 90°F in January and 68° to 84°F in July. The low plateau area is the driest part of the country. There, the town of Wajir receives an average annual rainfall of 320 mm (13 in) and experiences average temperatures ranging from 66° to 99°F in January and 66° to 93°F in July. Nairobi, the capital city situated in the temperate Kenyan highlands, receives an average annual rainfall of 790 mm (31 in) with average temperatures ranging from 48° to 84°F in January and 45° to 79°F in July. Areas of higher altitude within the highlands receive much larger amounts of rainfall. The Lake Victoria basin in Western Kenya is generally the wettest region in the country, in particular, the highland regions to the north and south of Kisumu, where average annual rainfall ranges from 1,740 mm (70 in) to 1,940 mm (80 in). Average temperatures in this region range from 57° to 93°F in January and 57° to 86°F in July.

Culture:

Kenya has a culture born of countless sources. This region has been crossed by the paths of a long and complex history. From the prehistoric records of early man to the present day, Kenya has been a land of unending change, contrasts and diversity. The early tribal states saw cycles of migration and shifting power, with Kenya as a meeting place for peoples from the plainlands of the south, the forests of the West and the deserts of the North. Kenya has drawn on all of these influences to develop its own unique culture. This is the nation's greatest strength- the ability to blend the best of many worlds into a strong, singular identity. Today, Kenya welcomes the world to its shores and continues to evolve a modern culture that is born of endless variety, and yet purely, proudly Kenyan.

Visa Information:

How to Apply for a Kenyan Visa

Steps:

Visit <https://www.etakenya.go.ke>

Click Apply Now and follow the instructions. Make sure that all the data has been entered correctly. Submit the application. An email confirming receipt of your application will be sent to you. Upon decision by Immigration officer, an email confirming Approval / Refusal will be sent to you. If your application has been approved, please either print the PDF document that has been attached to the email, OR download the document to your mobile device OR save it in the Kenya Travel Authorization mobile app. This is your electronic travel authorization that needs to be shown at all departure and arrival points. If your application has been denied, you will not be able to travel to Kenya for the moment.

Please contact support@etakenya.go.ke to report your situation and obtain further details. You can check the status of your application at any time by visiting the following URL: <https://www.etakenya.go.ke>

How far ahead of my travel should I apply for an eTA?

How far ahead of my travel should I apply for an eTA?

How far ahead of my travel should I apply for an eTA?

Processing time will vary depending on the type of eTA and your country of citizenship. Standard processing time is three (3) working days. Visitors wishing a faster turnaround or visitors requiring assistance by officers should apply for premium service. Can I apply for an eTA even before booking my journey? No, the travel information is an obligatory section of the application process. Therefore, it is only possible to apply for the eTA after having booked your transport and accommodation.

PASSPORT



Terms & Conditions

Booking Terms

- 1) All quotations are net /non-commissionable and inclusive of Government taxes/levies current at the time of quoting.
- 2) Once a booking is confirmed, an invoice will be sent, after which a 25% deposit payment should be made immediately to secure bookings firmly and the balance at least 70 days to arrival date. Where a booking is made within 70 days to arrival, full payment is required with confirmation.
- 3) Cancellation Policy:
 - a) To cancel any reservation, Cascades Africa Safaris must be notified in writing as soon as possible.
 - b) Notice of cancellation is only effective when it is received in writing.
 - c) In such case the following cancellation charges will be payable on accommodation and related services:
 - i. If cancelled 90 days and over - No charges.
 - ii. If cancelled 90 - 70 days and under, 15% cancellation charges will apply
 - iii. If cancelled 69 - 45 days and under, 50% cancellation charges will apply
 - iv. If cancelled 44 - 31 days and under, 90% cancellation charges will apply
 - v. If cancelled 30 days and under, 100% cancellation charges will apply
 - d) Unused portion of any Safari or Tour is not refundable.
 - e) Most small or/and up market accommodation establishments (advised at the time of quotation/booking) may require a non-refundable deposit to confirm bookings. Their cancellation policy may also vary. We will advise deposit amounts required and specific cancellation terms at the time of booking.

For detailed Cascades Africa Safaris booking terms and conditions please visit this page <http://www.cascadesafricasafaris.com/bookings-terms-conditions>